



# Making the Most of the Golden State Pathways Planning and Implementation Grant



# Fast Forward California

Drive new coherence across systems to ensure that funding for Golden State Pathways, Dual Enrollment, and other state programs result in increased college completion, meaningful employment, and equitable outcomes—and that local communities have the knowledge and support they need to access and apply these resources effectively.



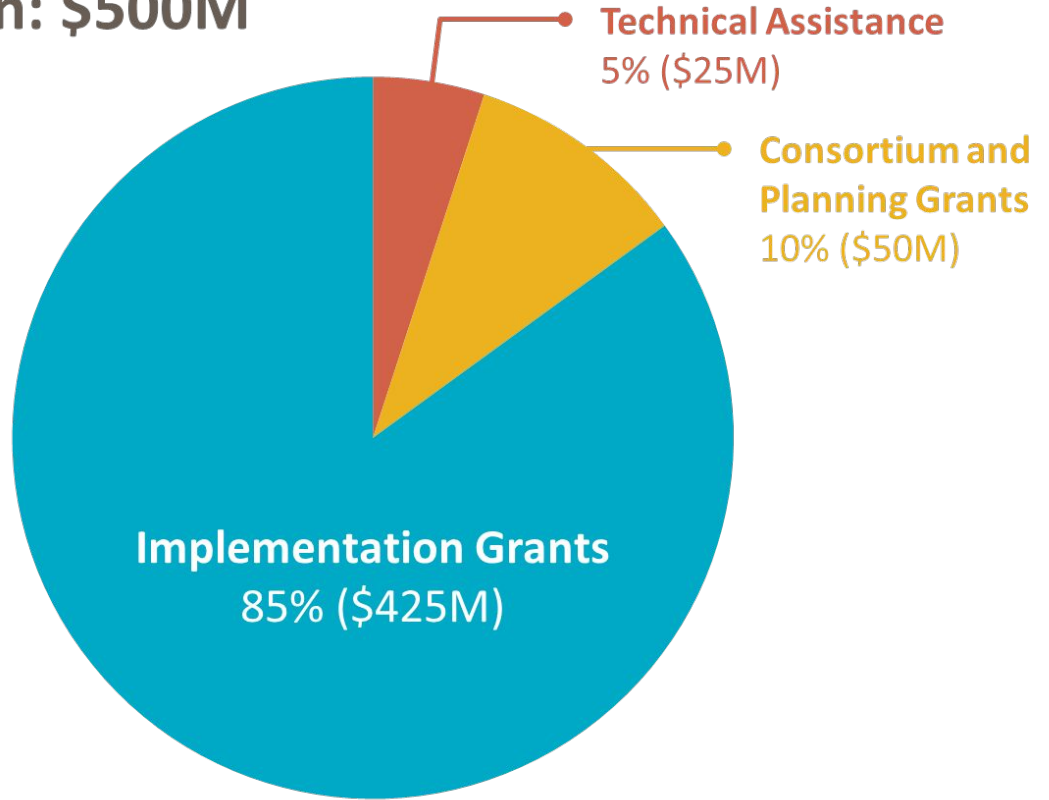
# **GOLDEN STATE PATHWAYS PROGRAM OVERVIEW**



## Golden State Pathways Program Legislation

- Frames the required elements of pathways supported through these funds
- Identifies priority grantees, priority sectors, as well as data collection and reporting requirements
- Calls for an independent evaluation of impact of the program
- Defines a 5-year timeline for the dollars to be used

# GSPP Funding Distribution: \$500M



# GSPP Framework: Student Experience



An integrated program of study that includes A-G & one other element of the CCI



Opportunity for at least 12 postsecondary credits (CCAP, AP, or IB only)



Full continuum of work-based learning (emphasis on internships and apprenticeships)



Integrated support services to support social, emotional, and academic needs

California's budget includes \$500M for college and career pathways that provide all of these elements



Integrated Program of Study







Work-Based Learning



Integrated Student Supports

# Priority Sectors

-  **Education, including early education and child development**
-  **Technology**
-  **Healthcare**
-  **STEM and climate-focused pathways**

These are not exclusive; pathways in other sectors are eligible for GSP funding, but LEAs deemed high priority who are developing pathways in these sectors receive priority for grant funding.

The background of the slide is a light blue color with a complex, white line-art pattern. This pattern includes various icons and symbols related to technology, education, and communication, such as circuit boards, speech bubbles, target symbols, and human profiles. The text 'Technical Assistance Centers' is prominently displayed in a dark blue, sans-serif font on the left side of the slide.

# Technical Assistance Centers

## **Regional Technical Assistance Centers (RTACs)**

- Humboldt County Office of Education
- Kern County Superintendent of Schools Office
- Los Angeles County Office of Education
- Napa County Office of Education
- San Bernardino County Superintendent of Schools
- San Diego County Office of Education
- San Luis Obispo County Office of Education
- Yuba Wheatland Union High School District

## **Lead Technical Assistance Center (LTAC)**

- Tulare County Office of Education





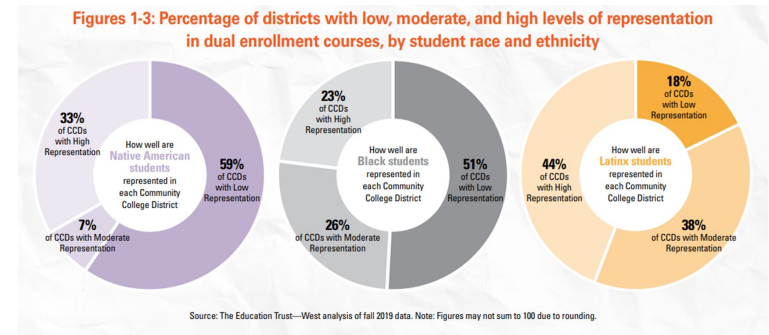
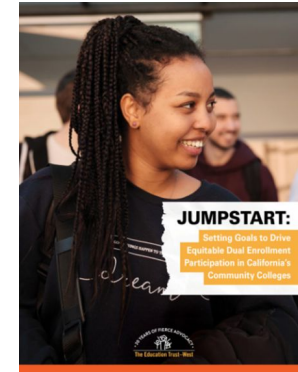
# FRAMING RACIAL EQUITY

# JUMPSTART: Setting Goals to Drive Equitable Dual Enrollment Participation in California's Community Colleges

Researchers at The Education Trust–West developed a report and accompanying tool to better understand dual enrollment participation and representation among students of color

An analysis of Black, Latinx, and Native American student participation data in dual enrollment within California's 72 Community College Districts\* found:

- Student groups who experience the most inequitable dual enrollment outcomes
- For each respective student group, the report examines the current levels of participation at each district
- Identifies enrollment goals necessary to reach equitable representation



# Dual Enrollment State Is an Equity Lever for Black, Latinx, and Native American Students

## California's Dual Enrollment Equity Issue

---

- Challenges are complex and interconnected with centuries of systemic racism across structures and need an equally coherent and multifunctional approach to resolve
- Students of color lack of access to resources and opportunities means, lack of access to wide-ranging and critical benefits reaped. California's promise of ed equity & racial justice lies in providing these opportunities.

## Dual Enrollment as an Equity Strategy

---

- Opportunity to **re-imagine** how strategies like dual enrollment can transform our systems and move us closer to closing racial equity gaps in education
- Expanding access to dual enrollment & pathways can help address these inequities & lack of opportunities
- GSPP provides these opportunities to students who need them the most



# Where GSPP comes in: Equity Excerpts from GSPP Framework



## Funding Allocations and Priorities

“...GSPP... prioritizes access to pathways in industries that offer **high-wage, high-skill, or high-growth** (HWSG) jobs in their regional ..[and] state econom[ies].”

## Integration and Coherence

“Pathways are an educational approach to better connect and align all aspects of instruction to support a unified strategy for preparing students for college and career success.”

# Why It Matters: Subsections from the GSPP Framework

## Integrated Program of Study:

“.. address[es] ..growing affordability challenge... by allowing students to earn postsecondary credits and credentials at little or no cost.”

## Work Based Learning Experiences:

“Work-based learning drives equity by providing students from all backgrounds with opportunities to build professional networks and social capital, gain insight into workplace dynamics and how to navigate them and earn income while developing skills aligned to a career of interest.”

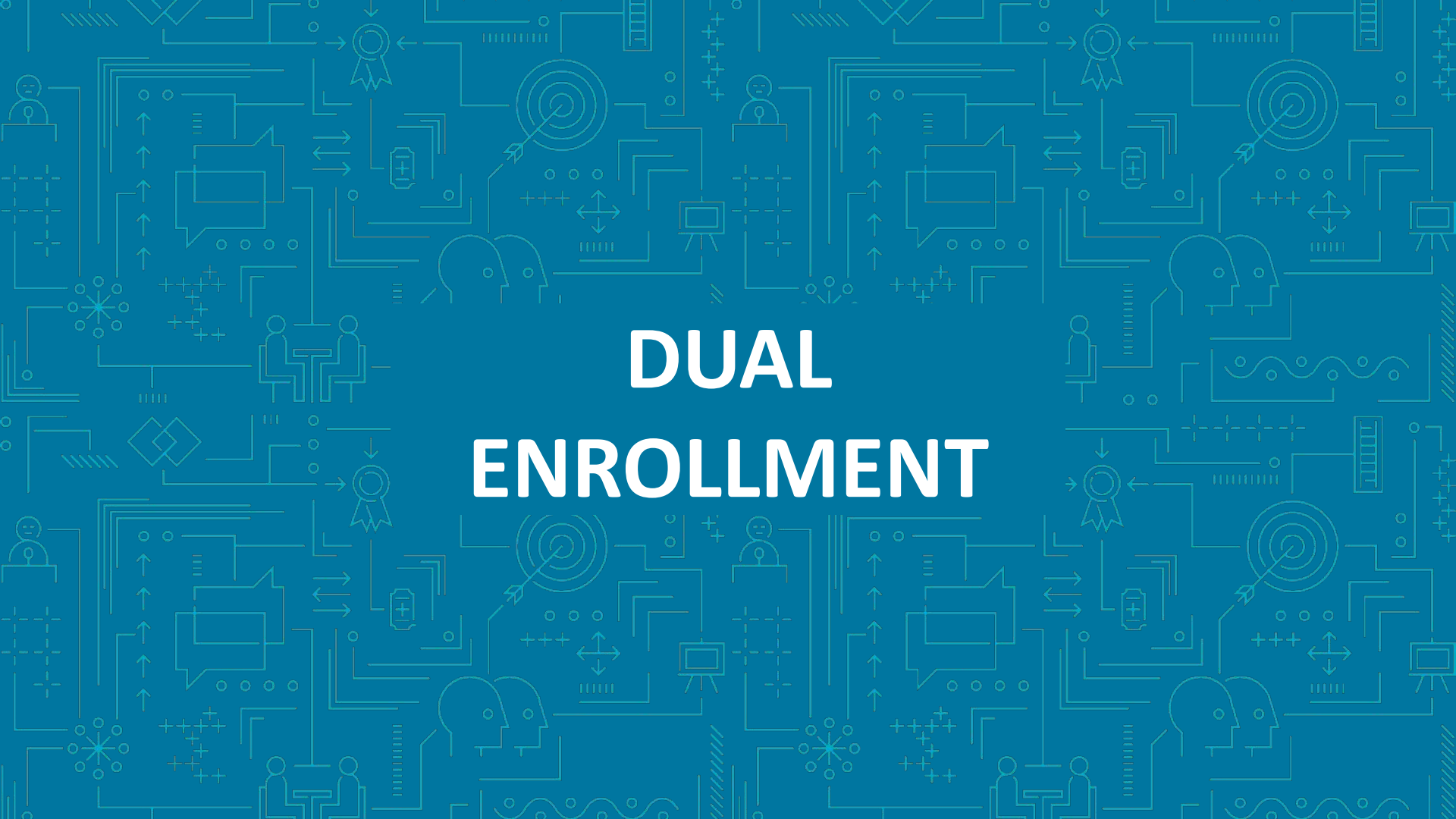
## Integrated Student Supports:

“Adolescence is a [key] time [in] students’ ..development... to seek deeper relationships, more complex thinking, and self-reflection

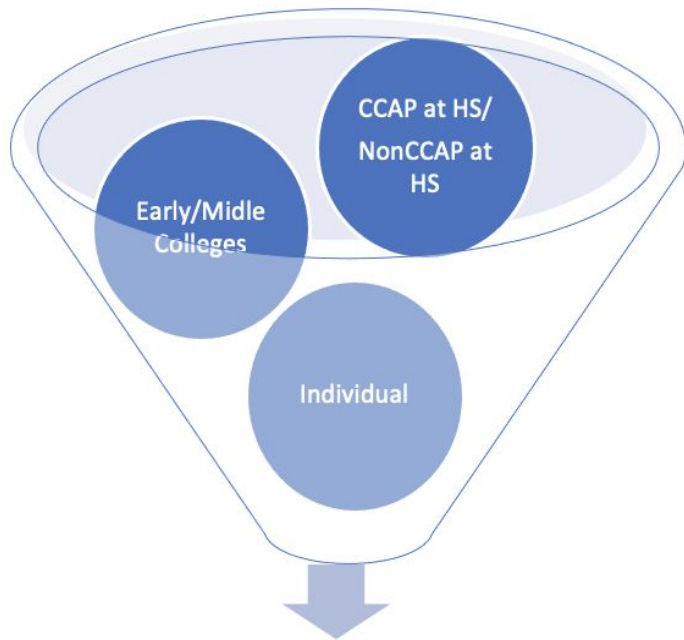
“... pathways should incorporate that understanding to nurture and guide students in their growth..”

“...This requires both community structures and individualized supports on the transition to college and career, social-emotional skills, and professional skills. The benefits of these integrated supports are particularly significant for students who attend schools in historically under-resourced communities.”

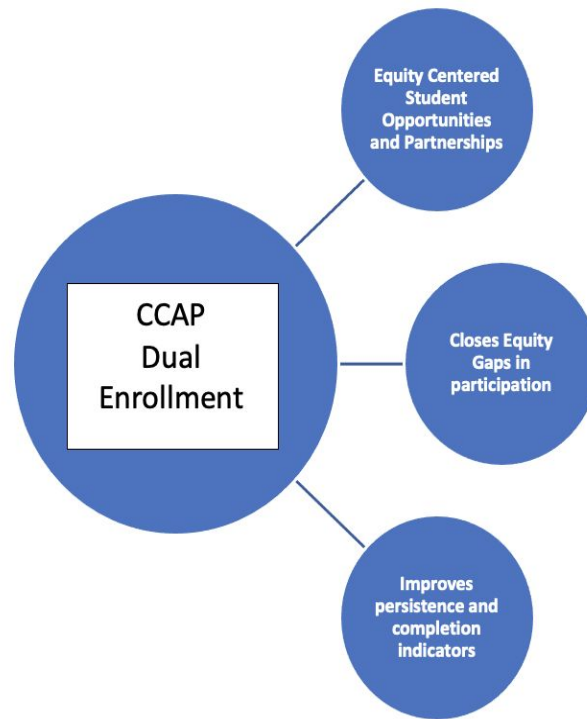




# DUAL ENROLLMENT



**Types of Dual Enrollment In California**





# Current Dual Enrollment Funding Opportunities

## College and Career Access Pathways (CCAP) Grant- \$100 Million- *Round 2 Open Now!*

- \$100K per high school for creating new or expanding existing CCAP partnerships

## Middle College and Early College Grant- \$100 Million- *Round 2 Open Now!*

- \$250K per high school district for creating new or expanding existing Early College or Middle College High Schools

## California Golden State Pathways Program Grant- \$500 Million- *Open Now!*

- Implementation Grants: Implementation grants are to support a grant recipient's ability to offer participating pupils high-quality college and career pathways opportunities consistent with the requirements of this chapter.

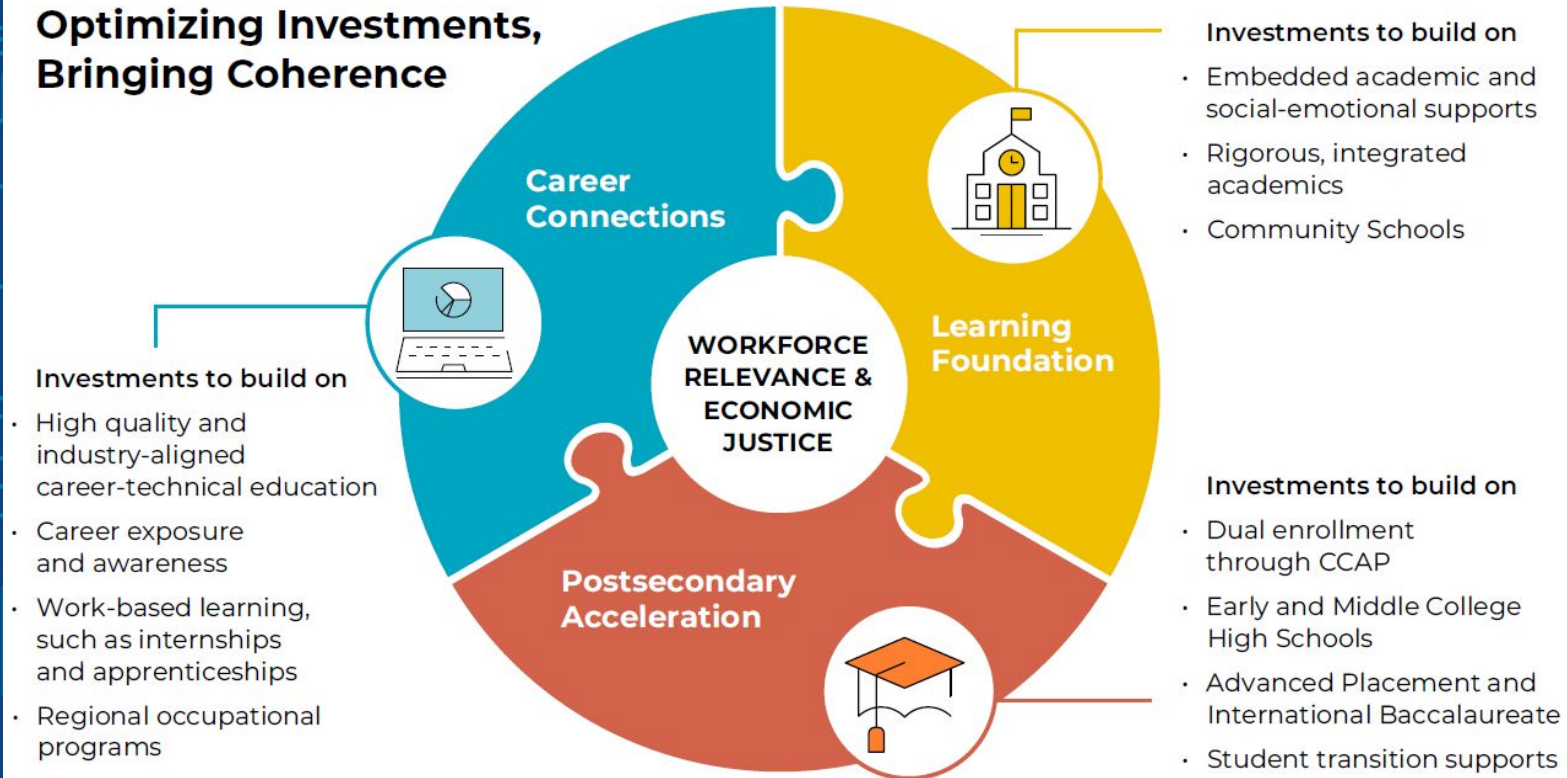
## Strong Workforce Program (SWP)- *Annual Applications*





# Catalyzing Coherence

## Optimizing Investments, Bringing Coherence





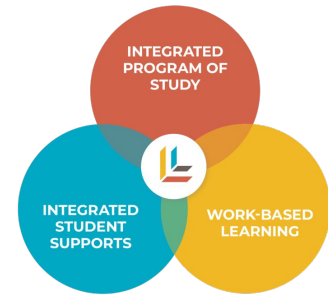
# **YOUR COMPETITIVE ADVANTAGE: PROPOSAL TIPS**

# GSPP Funding Opportunities for LEAs

Grant Period: April 2, 2024, through June 30, 2028

GSPP GRANT	Funding
<p><b>Consortium Grant</b> Lead Applicants and two or more program partners that want to develop, support, and establish career program opportunities or pathways.</p>	<p>Up to \$2 million for consortia with five members or less and \$4 million for consortia with six members or more. Up to \$500,000 per consortium member.</p>
<p><b>Planning Grant</b> To develop and establish a career focus program or pathway. An LEA can submit a single application with multiple pathways across multiple industries.</p>	<p>Up to \$200,000 per pathway for April 2024-June 2025 and up to \$500,000 per pathway for July 2025-June 2028.</p> <p>If an LEA is awarded a planning grant, funds will automatically be set aside for an implementation grant.</p> <p>Upon completion of a planning grant, qualifying LEAs will be asked to submit a budget and budget narrative form for the implementation grant.</p>
<p><b>Implementation Grant</b> For existing career focus programs, courses, or pathways that have been integrated that want to expand, enhance, or continue these programs. An LEA can submit a single application with multiple pathways across multiple industries.</p>	<p>Up to \$500,000 per pathway</p>

# GSPP Expected Outcomes Align to Linked Learning Framework



Integrated Program of Study  
inclusive of A-G Courses

12 Postsecondary Credits

Work-based Learning  
Experiences

Integrated Support Services

Industry Connected  
Pathways

Articulated Pathways with  
Post-Secondary and Business

Collaboratively Built  
Pathways

Sustainable Operations

Data Monitoring

# Proposal Tips

- Align your application with [GSPP Framework](#), and expected outcomes
- Make the case for priority sectors: high-wage, high need, high demand for your region
- Emphasize articulation, dual credit, and working with colleges
- Ensure cohorting to enable shared learning across disciplines and real-world projects
- Highlight your college and career support services
- Demonstrate your master plan for work readiness including internships and certifications
- Equity for all students is critical, include how will you ensure each student has opportunities for dual enrollment, work-based learning, and a college and career plan







# Additional Resources

- GSPP Framework ([Link](#))
- FFCA ([Website](#))
- CLP CCAP Grant Recipients Map ([Link](#))
- Linked Learning Student Outcomes ([Report](#))
- Spaces to connect
  - California Dual Enrollment Equity Conference, Feb. 20-23
  - Linked Learning Conference, April 8-11
- FFCA is here to help!







